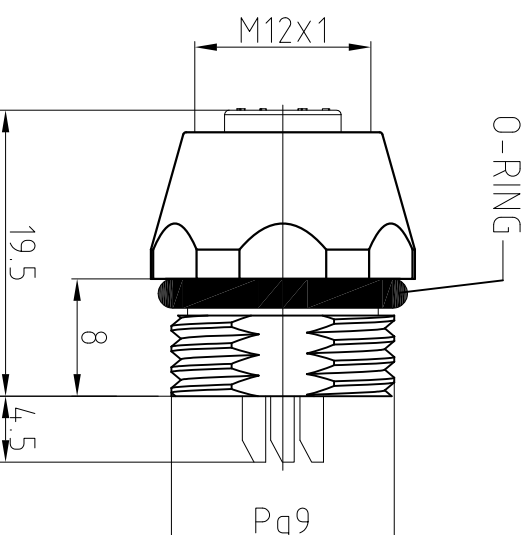
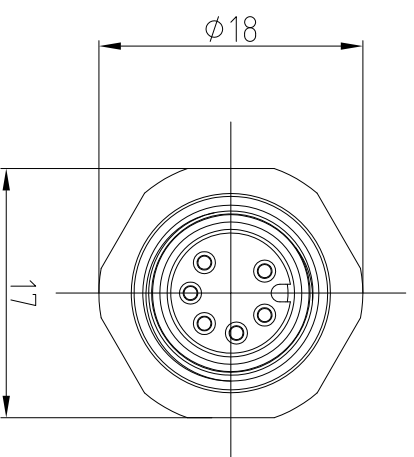
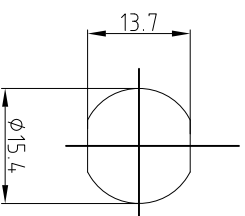
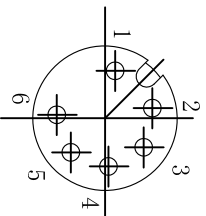

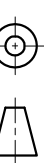


SUGGESTED PANEL CUT OUT



SPECIFICATIONS	
CONTACT CARRIER MATERIAL/COLOR	TPU/BLACK
CONTACT/PLATING	BRASS/GOLD
HOUSING MATERIAL/PLATING	BRASS/NICKEL
O-RING MATERIAL	FKM/NBR
OPERATING CURRENT	2 A
OPERATING VOLTAGE	60 V
CONDUCTOR CROSS SECTION(AWG)	24 AWG
OPERATING TEMPERATURE	-20°C — +105°C
PROTECTION CLASS	IEC IP67

UNIT OF MEASUREMENT						 Tianjin Geneuo Technology Co.,Ltd			
MILLIMETER									
REV	COUNT	DESCRIPTION OF REVISIONS	BY	CHECKED	DATE	Date: 2018.4.27		Description:	
						Approved Date:		FEK621-L	
						Process Y J F Date:2018.5.24			
						Checked WY Date:2018.5.3			
						Designed LXH Date:2018.4.27			
						3RD Angle Projection			
									
								www.gsee-tech.cn www.gsee-tech.com	
								SOURCE DRAWING-FOR REFERENCE ONLY	
								REV A	